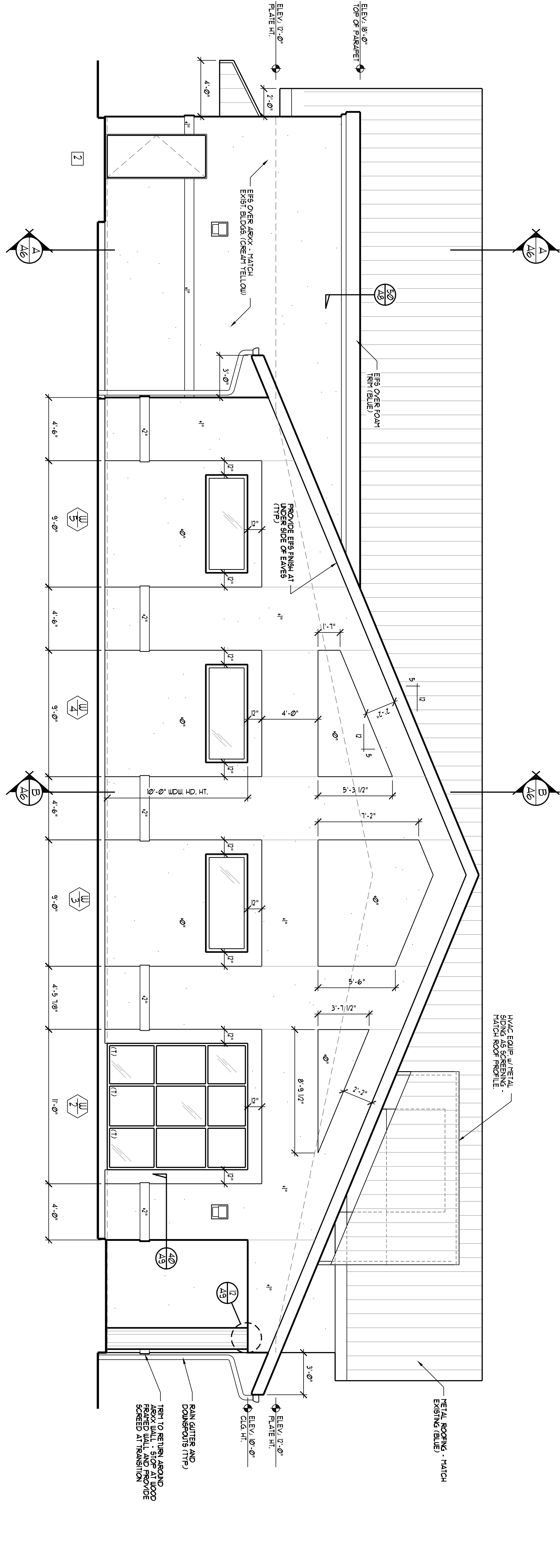


SOUTH ELEVATION

NOTE:
 ALL EXTERIOR VARIOUS WALLS TO BE PROVIDED WITH FINISH TO BE DETERMINED BY THE ARCHITECT. FINISH TO BE DETERMINED BY THE ARCHITECT.
 FINISH TO BE DETERMINED BY THE ARCHITECT.



EAST ELEVATION

EXTERIOR ELEVATIONS

SCALE: 1/4" = 1'-0"

A4
 SHEET NUMBER
 OF 36 SHEETS
 JOB NUMBER
 A-109-08

DATE: 10/21/08
 SCALE: 1/4" = 1'-0"
 DESIGNED BY: HRP/JKH/RE
 CHECKED BY: MPJ/DB

A NEW MULTI-USE FACILITY FOR:
CENTRAL VALLEY CHRISTIAN SCHOOL
 VISALIA, CALIFORNIA

T.A.E., Inc.
 ARCHITECTURE & PLANNING
 412 N. TOWER & 801 S. TULLETT
 VISALIA, CA 93281
 (559) 688-2011 FAX: (559) 688-2013

KEITH H. REYNOLDS - PRESIDENT
 CALIFORNIA STATE LICENSED ARCHITECT - C 24255

MICHAEL P. PORTER
 CALIFORNIA STATE LICENSED ARCHITECT - C 28921

EXTERIOR ELEVATIONS
 BUILDING : 1,808 SQFT.

DATE	REVISIONS

THIS IS AN ORIGINAL UNPUBLISHED WORK AND MAY NOT BE REPRODUCED, COPIED, CLONED, PUBLISHED OR OTHERWISE USED IN PART OR WHOLE WITHOUT WRITTEN CONSENT OF KEITH H. REYNOLDS, ARCHITECT, T.A.E. INC.

LICENSED ARCHITECT
 KEITH H. REYNOLDS
 C24255
 REN
 STATE OF CALIFORNIA